


# Luminex Molecular Diagnostics



xTAG™ Data Analysis Software  
for the  
xTAG™ Respiratory Viral Panel  
(TDAS RVP-I)

Version 1.11 User Manual

 For In Vitro Diagnostic Use

 TBR-731-016-007 Rev B

Copyright © 2008 by Luminex Molecular Diagnostics. All rights reserved.



Luminex Molecular Diagnostics  
439 University Ave., Toronto, Ontario, Canada  
M5G 1Y8  
Toll Free No.: 1-800-593-2370 Fax: 416-593-1066



Medical Device Consultants International Ltd  
Arundel House, 1 Liverpool Gardens, Worthing West Sussex, BN11 1SL, United Kingdom  
Tel: +44 (0) 1293 429 608

No part of this publication may be reproduced, stored in or introduced into a retrieval system, or transmitted, in any form or by any means (electronic, mechanical, photographic, audio, or otherwise) without written permission of Luminex Molecular Diagnostics, Inc.

Luminex Molecular Diagnostics reserves the right to modify its products and services at any time. This manual is subject to change without notice. Although prepared to ensure accuracy, Luminex Molecular Diagnostics assumes no liability for errors or omissions, or for any damages resulting from the application or use of this information.

### **Luminex Molecular Diagnostics Trademarks and Third Party rights**

xTAG™ is a trademark of Luminex Molecular Diagnostics, Inc.

Luminex® and xMAP® are registered trademarks of Luminex Corp.

QIAGEN® is a registered trademark of QIAGEN Inc.

Takara™ is a trademark of Takara Holdings Inc.

Thermowell® is a registered trademark of Corning Incorporated.

Falcon™ is a trademark of Becton, Dickinson and Company.

Windows® is a registered trademark of Microsoft Corporation.

Information about product warranties and licenses can be found in the package insert for the xTAG™ RVP Kit.

For Export Only. Not intended for sale in the United States

# Contents

Overview .....	1
Views, Printing and Exporting .....	1
Detection Calls Description .....	1
Starting the Software .....	3
Opening a Data File .....	3
Viewing Results Summary .....	4
Summary View Display .....	4
Display Options .....	5
File Information Bar .....	5
Legend Bar .....	6
Status Bar .....	6
Viewing Results Details .....	6
View Detailed Sample Results .....	6
View Detailed Target Results .....	7
Detailed Sample View Display .....	8
Detailed Target View Display .....	9
Printing Results Summary and Results Details .....	9
Print Complete Sample Results .....	10
Print Complete Target Results .....	11
Print Complete Sample and Complete Target Results .....	11
Exporting Results Summary .....	11
Exporting Results Details .....	12
Exporting to PDF .....	12
Administrating User Access .....	13
Enable Password-Controlled Access .....	14
Change Passwords .....	15
Disable Password-Controlled Access .....	15
Enable Log-on Function .....	15
Switch Identity .....	15
Disable Log-on Function .....	15
Reactivate TDAS RVP-I After a Timeout .....	16
Change or Disable Timeout Period .....	16
Using Command-Line Options .....	16
Launch TDAS RVP-I GUI .....	17
Export Analysis Results .....	17
Summary View Window .....	19
Menu Bar .....	19
Tool Bar .....	20
File Information Bar .....	20
Data Grid .....	20
Legend Bar .....	20
Status Bar .....	21
Open Dialog Box .....	21
About TDAS RVP-I Dialog Box .....	22
File Properties Dialog Box .....	22

---

Complete Data for Sample Dialog Box .....	23
View and Print Complete Data Dialog Boxes.....	24
Complete Data for Target Dialog Box.....	25
View Preferences Dialog Box.....	25
Print Items Dialog Box.....	26
Export to PDF Dialog Box.....	26
PDF Page Setup Dialog Box.....	28
Log-On TDAS RVP-I Dialog Boxes .....	28
Setup Passwords Dialog Box.....	29
Disable Passwords Dialog Box.....	30
Change Passwords Dialog Box.....	31
Options Dialog Box .....	31
xTAG Assays Analyzed by TDAS RVP-I.....	33
Summary View Messages.....	34
Detailed View Messages .....	36
Common Tasks .....	39
Open a Data File.....	39
Close a Data File.....	39
View Detailed Sample Results .....	39
View Detailed Target Results.....	39
Print Summary Results.....	40
Preview Print Summary Results .....	40
Print Complete Sample Results .....	40
Print Complete Target Results.....	40
Export Summary Results.....	40
Export Complete Results .....	40
Export to PDF.....	41
Change the Negative Control Sample .....	41
View Available Assays.....	41
Maximize the Data Display Area.....	41
Toggle Target Columns .....	42
Expand Column Headers .....	42
Enable Password Protection.....	42
Disable Password Protection.....	42
Change Passwords .....	42
Enable Log-On .....	42
Disable Log-On .....	43
Switch Identity .....	43
Change Timeout Period.....	43
Disable Timeout .....	43
Open TDAS RVP-I GUI from Command Line .....	43
Export Results Summary from Command Line.....	43
Export Results Details from Command Line .....	44

---

The Luminex Molecular Diagnostics xTAG™ Data Analysis Software for the xTAG™ Respiratory Viral Panel (TDAS RVP-I) provides target detection calls from the data obtained with the xTAG™ Respiratory Viral Panel (xTAG™ RVP Test) which is based upon the Universal Array Tags on Luminex® xMAP™ technology. Luminex xMAP technology is a bead-based array platform which utilizes Luminex Molecular Diagnostics' Universal Array for nucleic acid based assays. Luminex software creates data in the form of a Comma Separated Values (CSV) file which can be opened using TDAS RVP-I. By opening the CSV file created in the Luminex software, TDAS RVP-I detects the assay module to use, analyzes the data accordingly, and displays the summary calls on the screen.

## *Views, Printing and Exporting*

---

The Summary View is the main window and displays the detection calls for each target and sample. It provides links and functions to display, print, and export analysis information. Detailed information for each sample or target can be viewed by selecting a sample or a target and opening a new view. All views can be printed individually, or as a full set of sample views or target views. Data can be exported into a CSV file either as summary data that consists of the target detection calls, or as detailed data including all data and calls. Data can also be exported to a file in PDF format, with options to include some or all views, and some or all samples or targets. The PDF export file also has the option of including graphical views of the sample and target data.

## *Detection Calls Description*

---

To make target detection calls, the software performs calculations and compares the results to empirically-derived threshold values specific to each assay. The first comparison determines whether the assay falls within the required ranges for background values for each target based on a negative control sample. By default, the

negative control sample is the last sample read on the plate. If a background signal is higher than acceptable values, the assay fails and a No Call result is made for all samples and all targets. If the assay shows no background values higher than acceptable values, each sample is analyzed individually. Signal values for each target are analyzed using assay-specific calculations and thresholds to make the target detection calls. See the relevant assay-specific section for more information on how target detection calls are made for each assay.

---

This section is a brief tutorial on the xTAG Data Analysis Software for the xTAG Respiratory Viral Panel (TDAS RVP-I), and contains basic instructions to open a data file, view and analyze results, print views, and export data

## *Starting the Software*

---

To start the software, double-click the TDAS RVP-I icon on your PC desktop. Enter a user name and password if prompted.

## *Opening a Data File*

---

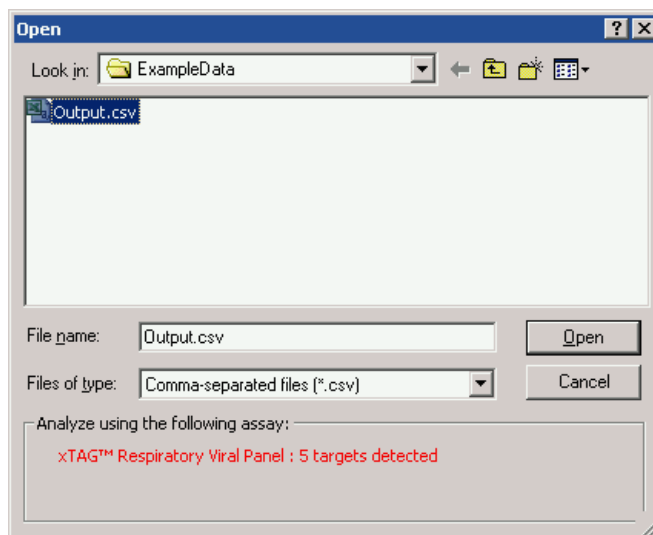
1. On the **File** menu, click **Open**. The **Open** dialog box opens.
2. On the **Files of Type** menu, select **All Files**.
3. Select the file you want to use.

**NOTE:** Ensure that you choose only files created with the Luminex software, using the assay-specific template described in the package insert. If the chosen data file does not conform to the format required, the software will not analyze the data.

4. Ensure that the **Analyze using the following assay** message displays the correct assay, and that at least one target is detected. For example, the message box should display "xTAG Respiratory Viral Panel" when analyzing the xTAG RVP Test data.
5. Click **Open** to begin the analysis step.

When the analysis step completes, the summary view displays.

**NOTE:** The software will not analyze data files where bead names are modified during or after the data acquisition stage, or if a sample name contains the double-quote character (").

**FIGURE 1. Open Dialog Box**

## *Viewing Results Summary*

This section describes how to view results summaries, as well as some display options.

### **Summary View Display**

The **Summary View** provides a listing of the target detection calls for each sample based upon the data file opened. These calls are the key end-point to running xTAG assays. The rows include sample names along with the plate well location to provide unique identification of the samples which enables the data to be correlated with sample information from other data sources. Each subsequent column corresponds to an individual target. Depending on the assay, these columns may be preceded with a summary column, providing a list of targets for which POS calls have been made. Finally, the last column contains explanations for No Call if one or more cells in the row have a No Call, or notes relevant to the calls made. The list of possible No Call messages is assay-specific; for more information on the No Call explanations please see the relevant assay-specific section.

FIGURE 2. Summary View

TDAS RVP-I (version 1.11) - Summary view

File name: C:\My Batches\ExampleData\Output.csv Date and time created: 08/09/2007,10:50:40 AM  
 Batch name: ExampleData Analyzed by: AB

Lo...	Sample	POS Calls	Run Control	Internal C...	Influenza a...	RSV A	RSV B	Notes and explanations
A1	Sample 1		ABS	PRES	NEG	NEG	NEG	
B1	Sample 2		ABS	PRES	NEG	NEG	NEG	
C1	Sample 3	Influenza B	ABS	PRES	POS	NEG	NEG	
D1	Sample 4		ABS	PRES	NEG	NEG	NEG	
E1	Sample 5		ABS	PRES	NEG	NEG	NEG	
F1	Sample 6		ABS	PRES	NEG	NEG	NEG	
G1	Sample 7		ABS	PRES	NEG	NEG	NEG	
H1	Sample 8		ABS	PRES	NEG	NEG	NEG	
A2	Sample 9	RSV B	ABS	PRES	NEG	NEG	POS	
B2	Sample 10	RSV A	ABS	PRES	NEG	POS	NEG	
C2	Sample 11		ABS	PRES	NEG	NEG	NEG	
D2	Sample 12		ABS	PRES	NEG	NEG	NEG	

Analyzed using: xTAG™ Respiratory Viral Panel

- Target not detected
- Target detected
- Call(s) not made
- Unexpected control call(s)
- Sample has at least one target detected
- Signal significant
- Run control sample
- Negative control sample

This data file has been analyzed using the Luminex Molecular Diagnostics xTAG™ Respiratory Viral Panel analysis module. Please read the help or the manual for details about the possible calls, the messages, and the software in general.  
 CAUTION: As with any hybridization-based assay, underlying polymorphisms in primer-binding regions can affect the targets being detected and subsequently the calls made.

Ready NUM

## Display Options

- Expand the column header: Double-click on the right edge of the column header to display the full contents of the column.
- Change the negative control sample: Data analysis is dependent on which sample is set as the negative control sample. By default, the last sample read is used as the negative control sample. To change this default, right-click on a sample, then click Mark as Negative Control. When changing the negative control sample, if a **Complete sample data** or **Complete target data** dialog box opens, it closes automatically. TDAS RVP-I re-analyzes the data and produce new results (the new results depend on the negative control sample data).

## File Information Bar

The file information bar contains information about the current batch:

- **File name** - name of the CSV file currently being analyzed and displayed
- **Batch name** - used to uniquely identify the Luminex batch that created the CSV file,
- **Date and time created** - the date and time that the CSV file was created using the Luminex IS software.

- **Analyzed by** - user name of the person currently logged on to TDAS RVP-I (if log-on is enabled and a file has been opened)

## Legend Bar

The legend bar at the bottom of the page lists the name and version of the assay analysis module used to analyze the data file, along with an assay-specific description of the colours used to distinguish the cells within the data display grid.

## Status Bar

The status bar can include additional assay-specific information to aid in the analysis of the target detection calls.

## *Viewing Results Details*

---

Detailed results for each sample or target can be viewed once a data file has been successfully opened and TDAS RVP-I displays the summary results. Two types of detailed views can be opened from the Summary View. A detailed view of the sample data provides a listing of the complete data of all targets for the chosen sample. A detailed view of the target data provides the complete data for all samples for a chosen target. Multiple windows are opened if more than one sample or target was selected.

## View Detailed Sample Results

**NOTE:** When TDAS RVP-I is password protected, this feature is only available to Full Access Level users.

TDAS RVP-I displays the summary results of an open data file. To view the complete result set for any sample(s), perform the following steps:

1. Select the sample(s) from the summary view by clicking on the respective entries (to select more than one sample, hold down the Ctrl key; to select a continuous group of samples, hold down the Shift key and press the up and down arrow keys).
2. Right-click the selection, then click **Show Complete Sample Data...**

You can also double-click the **Location** or **Sample** column of a specific sample.

**NOTE:** TDAS RVP-I displays complete sample results for each of the selected samples in a separate window. If you select multiple samples, multiple windows open.

**FIGURE 3. Complete Sample for Data Dialog Box**

Target	Call	Signals (MF)		Thresholds		Notes and explanations
		Raw	Background	Positive	Negative	
Run Control	ABS	56.0	28.0	300 / 1x	300 / 1x	
Internal Co...	PRES	2607.0	23.0	300 / 1x	300 / 1x	
Influenza B	POS	2475.0	47.0	300 / 1x	150 / 1x	
RSV A	NEG	61.0	67.0	300 / 1x	150 / 1x	
RSV B	NEG	56.0	28.0	300 / 1x	150 / 1x	

Analyzed using: xTAG™ Respiratory Viral Panel

- Target not detected
- Target detected
- Call(s) not made
- Unexpected control call(s)
- Sample has at least one target detected
- Signal significant
- Run control sample
- Negative control sample

This data file has been analyzed using the Luminex Molecular Diagnostics xTAG™ Respiratory Viral Panel analysis module. Please read the help or the manual for details about the possible calls, the messages, and the software in general.  
CAUTION: As with any hybridization-based assay, underlying polymorphisms in primer-binding regions can affect the targets being detected and subsequently the

Print Help Close Close all sample data windows

## View Detailed Target Results

**NOTE:** When TDAS RVP-I is password protected, this feature is only available to Full Access Level users.

TDAS RVP-I displays the summary results of open data files. To view the complete result set for any target, right-click the column heading corresponding to the target you want to view complete results for, then click **Show Complete *target* Data** where *target* is the name of the target you clicked.

**NOTE:** TDAS RVP-I displays complete sample results for each of the selected samples in a separate window. If you select multiple samples, multiple windows open.

**FIGURE 4. Complete Data for Target Dialog Box**

Location	Sample Name	Call	Signals (MFI)		Thresholds		Notes and explanations
			Raw	Background	Positive	Negative	
A1	Sample 1	NEG	27.5	47.0	300 / 1x	150 / 1x	
B1	Sample 2	NEG	67.0	47.0	300 / 1x	150 / 1x	
C1	Sample 3	POS	2475.0	47.0	300 / 1x	150 / 1x	
D1	Sample 4	NEG	48.0	47.0	300 / 1x	150 / 1x	
E1	Sample 5	NEG	60.0	47.0	300 / 1x	150 / 1x	
F1	Sample 6	NEG	65.0	47.0	300 / 1x	150 / 1x	
G1	Sample 7	NEG	15.0	47.0	300 / 1x	150 / 1x	
H1	Sample 8	NEG	47.0	47.0	300 / 1x	150 / 1x	
A2	Sample 9	NEG	27.5	47.0	300 / 1x	150 / 1x	

Analyzed using: xTAG™ Respiratory Viral Panel

- Target not detected
- Target detected
- Call(s) not made
- Unexpected control call(s)
- Sample has at least one target detected
- Signal significant
- Run control sample
- Negative control sample

This data file has been analyzed using the Luminex Molecular Diagnostics xTAG™ Respiratory Viral Panel analysis module. Please read the help or the manual for details about the possible calls, the messages, and the software in general.  
 CAUTION: As with any hybridization-based assay, underlying polymorphisms in primer-binding regions can affect the targets being detected and subsequently the

Print Help Close Close all target data windows

## Detailed Sample View Display

Data displayed in the detailed sample view provides information used to determine the target detection calls for that sample. Sample data for each target is listed on independent rows.

The columns displayed are dependent on the assay ran, but can be described in general as follows:

- The first column displays the target name.
- The second column displays the target detection calls, which are coloured according to the legend.
- The subsequent two columns display the raw and background signals as median fluorescence intensity (MFI) values. Raw signals are obtained from the original CSV data file opened by TDAS RVP-I. Background signals are obtained from the original CSV data file in the negative control well for each target. The cells are coloured to indicate the presence of a signal based upon the assay-specific signal threshold values.
- The next two columns display the threshold values used to determine the target detection calls. Thresholds may have different values for each target, depending on the empirically derived values for an assay.
- The last column displays explanations for the No Calls where a No Call is present. See the relevant assay-specific section for more detailed information on the possible calls and display features.

Double-click on the right edge of a column header to display the full contents of the column.

Use the buttons at the bottom of the window to print the view, get help, close the window, or close all sample windows.

## Detailed Target View Display

Data displayed in the detailed target view provides information to determine target detection calls for all samples, for that particular target. Each row contains data for one sample.

The displayed columns depend on the specific target, but can be described as follows:

- The first two columns identify individual samples by displaying their plate locations and sample names.
- The next column displays the target detection calls, which are coloured according to the legend.
- The subsequent two columns display the raw and background signals as median fluorescence intensity (MFI) values. The raw signals are obtained from the original CSV data file opened by TDAS RVP-I. The background signals are obtained from the original CSV data file in the negative control well for each target. The cells are coloured to indicate the presence of a signal based upon the assay-specific signal threshold values.
- The next two columns display the threshold values used to determine the target detection calls. The thresholds may have different values for each target, depending on the empirically derived values for an assay.
- The last column displays the explanations for the No Calls where a No Call is present. See the relevant assay-specific section for more detailed information on the possible calls and display features.

Double-click on the right edge of a column header to display the full contents of the column

Use the buttons at the bottom of the window to print the view, get help, close the window, or close all target windows.

## *Printing Results Summary and Results Details*

---

You can print results summary data and results details of an open data file. These printouts are ideal for creating hard copy reports of the target detection calls. They contain the same information displayed in the software window. When you print results details, sample or target detailed data prints one view at a time, or as selected sets of either sample details or target details. If you print in colour, the colours used to distinguish the calls are the same as in the summary view, with alternate rows shaded to differentiate subsequent rows. If you print in black and white, the colours used to distinguish the calls are not present but the alternate row shading format is

maintained. Due to size and readability issues, a printout may not fit on one page. You should perform a print preview before printing and make any printer option changes as required.

To print the summary view (after a file has been successfully opened), on the **File** menu, click **Print**.

To preview the summary printout, on the **File** menu, click **Print Preview**.

If you do not want TDAS RVP-I to scale the summary view to fit horizontally on one page, un-check Scale printout to fit in page width. The default-sized printout may print on several pages.

If you want to print the summary view on a black-and-white printer and do not wish the printer to use the grayscale versions of the colours, un-check the "Send color data to printer" box; the printout will contain the alternate row shading format only and will no longer use colour to distinguish the target detection calls.

## Print Complete Sample Results

**NOTE:** When TDAS RVP-I is password protected, this feature is only available to Full Access Level users.

To print the complete results for one or more samples follow one of the methods below:

- Display the complete results for the samples you want (as described in the Viewing Results Details section). Click **Print** in any of the resulting windows.
- Click on appropriate **Location** or Sample cell(s). To select more than one sample, hold down the Ctrl key; to select a continuous group of samples, hold down the Shift key and press the up and down arrow keys. Right-click any of the selected samples and choose **Print Complete Sample Data**.
- On the **File** menu, click **Print All**. In the **Print Items** dialog box, ensure that **Include the following Samples** is checked. Click **OK**. If you do not want to select all samples, select a specific sample using the left button of your mouse. To select multiple samples, use the left button of your mouse in conjunction with the Ctrl or Shift keys.

The first method has the advantage that you will know exactly what will be printed, since you have the results on display. The second method will print without displaying the results first, which is a faster way to get the printing done, but requires that you have selected only the samples that you want printed. The third method is most useful for quickly generating hard copy reports of all samples (and all targets, or data from all views).

## Print Complete Target Results

**NOTE:** When TDAS RVP-I is password protected, this feature is only available to Full Access Level users.

To print the complete results for one or more targets, perform one of the following actions:

- Display the complete results for the targets you want (as described in the Viewing Results Details section). Click **Print** in any resulting window.
- Right-click any cell of the target you want to print. Choose **Print Complete *target* Data**, where *target* is the name of the target you have clicked on.
- On the **File** menu, click **Print All**. Ensure that the **Include the following Targets** checkbox is checked in the **Print Items** dialog box, then click **OK**. If you do not want all targets to be selected, you can select a specific target using the left button of your mouse. To select multiple targets, use the left button of your mouse in conjunction with the Ctrl or Shift keys. The **Select All Targets** button will allow you to select all of the targets. Note that this dialog box also allows you to print the **Summary View** and complete sample results.

In the first method, you will know exactly what will be printed, since you have the results on display. In the second method, you choose a specific target to print without opening the detailed view display. The third method is most useful for quickly generating hard copy reports of all targets (and all samples, or data from all views).

## Print Complete Sample and Complete Target Results

**NOTE:** When TDAS RVP-I is password protected, this feature is only available to Full Access Level users.

If you do not want TDAS RVP-I to try to scale the detailed view to fit horizontally on one page, un-check the "Scale printout to fit in page width" box; the summary will then be printed in the default size (which may need several pages in width).

If you want to print the detailed view on a black-and-white printer and do not wish the printer to use the grayscale versions of the colours, un-check **Send color data to printer**; the printout will contain the alternate row shading format only and will no longer use colour to distinguish the calls.

## *Exporting Results Summary*

---

You can export summary data of an open data file to a CSV file. You can then import the CSV file to any common spreadsheet program for further analysis or

presentation. The exported summary data contains all the data displayed in the summary view.

To export summary results:

1. On the **File** menu, click **Export Summary As...**
2. In the **Export Summary** dialog box, specify the location and file name for the exported data.

## *Exporting Results Details*

---

**NOTE:** When TDAS RVP-I is password protected, this feature is only available to Full Access Level users.

You can export detailed data from an open data file to a CSV file. The raw and background signals displayed in the detailed views, as well as calls for all samples and all targets are exported to one CSV file. You can then import the CSV file into any common spreadsheet program for further analysis or presentation, but it cannot be used by TDAS RVP-I to re-analyze the data.

To export results details:

1. On the **File** menu, click **Export Full Data As...**
2. In the **Export Complete Data** dialog box, specify the location and file name for the exported data.

## *Exporting to PDF*

---

You can export data to a PDF file once a data file has been successfully opened and TDAS RVP-I displays the summary results. You specify the contents of the PDF report through a dialog box. The PDF report can contain all or some of the following sets of data in tabular format: summary view data; detailed sample data; and detailed target data. You can also export detailed sample and target data in graphical format. The PDF export contains bookmarks to each individual sample and each individual target present in the report, as well as other analysis information as presented by TDAS RVP-I views.

**NOTE:** When TDAS RVP-I is password protected, only the summary view data can be exported by Restricted Access Level users. The detailed sample and target data can only be exported by Full Access Level users.

Once a data file has been successfully opened, on the **File** menu, click **Export to PDF** to export the results to a PDF.

**NOTE:** If the **Export to PDF** command is grayed out, you will need to reinstall TDAS RVP-I allowing printer installation privileges. See your IT administrator if you do not have the appropriate privileges.

In the **Export to PDF** dialog box, you can select from the following options for exporting the data to the PDF file:

- **Include Summary** includes the summary data in the PDF report.
- **Include the following Samples** includes the sample data. If you do not want to select all samples, click on a specific sample. To select multiple samples, press the Ctrl key while clicking on each sample you want to include.. Select All Samples selects all of the samples.
- **Include histogram** includes the graphical views for the sample data.
- **Include the following Targets includes the target data.** If you do not want to select all targets, click on a specific target. To select multiple samples, press the Ctrl key while clicking on each sample you want to include.
- **Select All Targets** selects all of the targets.
- **Include histogram** includes the graphical views for the target data.
- **Browse...** opens a dialog box where you specify the location and file name of the exported data.

Click **OK** to open the **PDF Page Setup** dialog box. Set the following options for exporting the data:

- Paper size.
- Portrait or landscape page orientation
- Page margins
- **Scale printout to fit in page width** scales each view to fit horizontally on one page. If you un-check this option, each view is printed in the default size (which may print on several pages).
- **Send color data to the output** makes all the colours present in the PDF report. If you un-check this option, the data grids contain alternate row shading only, and will not use colour to distinguish the calls.

Click **OK** to create the **PDF** report.

## *Administrating User Access*

---

Use log-on, password, and timeout functions to provide controlled access to TDAS RVP-I. The log-on function allows users to enter a user name for display, print and export purposes. The password function distinguishes between a Restricted Access Level user and a Full Access Level user through the use of two distinct passwords. The timeout option requires the user to log-on if TDAS RVP-I is idle for a set period of time.

When TDAS RVP-I is log-on enabled, users are prompted to enter a user name when the software is started, if the software log-on has timed out, or when switching user names.

The user name is used for display, print and export purposes, and may be left blank.

The user name entered to log on to TDAS RVP-I displays on the information bar beside the "Analyzed by" label in the summary view. It is incorporated in all printouts and export files. You can disable the log-on function. If TDAS RVP-I is password protected, disabling the log-on function also disables password protection and the timeout functions.

When TDAS RVP-I is password protected, users are prompted to enter a user name and a password when the software is started, if the software log-on has timed out, and when switching user names. Although the user name may be left blank, the user must enter a valid password. The password determines the level of access that the user has within the software. A Full Access Level user has access to summary results, detailed views, full data export, and administrative privileges. A Restricted Access Level user has access to summary results only. Passwords for the two access levels are set up at the time of installation or by enabling the function after the software is installed. A Full Access Level user may change the passwords at any time or disable the function completely.

The timeout function is available only when TDAS RVP-I is log-on enabled. Users must log on to access TDAS RVP-I if idle for over a pre-set time. The default timeout is 10 minutes. You can change timeout period during an active session of TDAS RVP-I. When TDAS RVP-I is log-on and password enabled, only Full Access Level users can change the timeout period.

## Enable Password-Controlled Access

Enabling password protection automatically enables the log-on function. Password protection may be set up at the time of installation. To enable password protection at a later time, select **Enable Password** on the **Admin** menu.

In the **Setup Passwords** dialog box, specify **Full Access Level** and **Restricted Access Level** passwords. If you choose to set only a Full Access Level password, enter and re-enter the password in the appropriate text boxes under **Full Access Level**, leaving the **Restricted Access Level** password blank. You must set up a Full Access Level password before you can set up a Restricted Access Level password. If you want to give full access to all users, you should disable password protection rather than leaving both passwords blank. Once setup of password protection is complete, you are prompted to log on with a password before proceeding with TDAS RVP-I.

**NOTE:** Passwords must be 30 alphanumeric characters or less. To reset passwords if the Full Access Level password is lost or forgotten, you must re-install TDAS RVP-I.

## Change Passwords

You must have Full Access Level to change passwords.

1. On the **Admin** menu, click **Change Passwords**.
2. In the **Change Passwords** dialog box, enter the current **Full Access Level** password.
3. Enter the new password information.

**NOTE:** Passwords must be 30 alphanumeric characters or less.

## Disable Password-Controlled Access

You must have Full Access Level to change passwords.

1. On the **Admin** menu, click **Disable Password**.
2. In the **Disable Password** dialog box, enter the current **Full Access Level** password.

**NOTE:** Disabling password protection does not disable the log-on function.

## Enable Log-on Function

Log-on is automatically enabled if TDAS RVP-I is password protected. To enable log-on when TDAS RVP-I is not password protected, select **Enable Log-On** from the **Admin** menu. In the **Log-on** dialog box, enter a user name. The user name is used for display, print, and export options, and may be left blank by the user.

## Switch Identity

To change identity when TDAS RVP-I is log-on enabled:

On the **Admin** menu, click **Switch Identity**. The **Log-on** dialog or **Log-on** with password dialog opens. Enter a new user name and password, if a password is required. Click **OK**.

## Disable Log-on Function

If access to TDAS RVP-I is password protected, disabling the log-on function disables password protection.

To turn off log-on and password protection:

1. On the **Admin** menu, click **Disable Log-on**.
2. In the **Disable Password** dialog box, enter the **Full Access Level** password.

To turn off the log-on function if access to TDAS RVP-I is only log-on enabled, select **Disable Log-on** from the **Admin** menu.

## Reactivate TDAS RVP-I After a Timeout

When the log-on function is enabled, TDAS RVP-I can be set to time out after it has idled for longer than a pre-set period of time.

To reactivate a session: Click anywhere in the TDAS RVP-I window. The **Log-on** dialog box or **Log-on** with password dialog box opens. Enter a new user name and password, if a password is required. Click **OK**.

## Change or Disable Timeout Period

If TDAS RVP-I is log-on and password enabled, only Full Access Level Users can change the timeout period.

To change or disable the timeout function:

1. On the **Admin** menu, click **Options**.
2. In the **Options** dialog box, enter the desired timeout period in minutes. To disable the timeout function, enter 0 as the timeout period.

## *Using Command-Line Options*

---

TDAS RVP-I provides command-line options which can be run from a DOS prompt, in a Windows "Run" dialog, or as part of a DOS batch file. To run command-line options from a directory other than the one that TDAS RVP-I is installed, add the TDAS RVP-I installation directory in the "PATH" environment variable. Please contact your system administrator for instructions on setting the "PATH" environment variable.

The TDAS RVP-I features that are currently available as command-line options are:

- launching the TDAS RVP-I graphical user interface (GUI)
- exporting analysis results in CSV format

Please note that some features require passwords as part of the command when TDAS RVP-I is password protected; refer to the Administrating user access help topic for more information on password protection.

**Important:** The syntax for each command-line option begins with the executable "TDAS RVP-I", followed by a list of parameters. Parameters encased in square brackets are optional. Words in italics should be replaced by the actual values when running the command. Characters in bold must be used as is.

---

## Launch TDAS RVP-I GUI

This command-line option launches the TDAS RVP-I GUI. The syntax for this command is:

```
"TDAS RVP-I" filename [-uUser] [-pPassword] [-q]
```

Parameters:

*filename*

This is the name (including the path, if necessary) of the data file to be opened and analyzed by TDAS RVP-I. If TDAS RVP-I cannot find exactly one assay module to analyze this data file, TDAS RVP-I displays the Open dialog box and explains the reason why the file cannot be opened. If this parameter is not specified in the command-line, TDAS RVP-I launches without opening any data file.

**-u***User*

This optional parameter submits the name of the user that runs this command. The user name is mainly for log-on information purposes and displays on the TDAS RVP-I window. This parameter is ignored if log-on is not enabled.

**-p***Password*

This parameter submits the password for accessing TDAS RVP-I. If TDAS RVP-I is not password protected, this parameter is ignored.

**-q**

This optional flag opens and analyzes the data file specified in the filename parameter without any user interaction. If TDAS RVP-I cannot find an assay module to analyze the data file, TDAS RVP-I launches without opening any data file.

## Export Analysis Results

This command-line option exports the analysis results as a CSV file. Please refer to the Exporting results summary or the Exporting results details help topic for more information on the content of the exported results file. The syntax for this command is:

```
"TDAS RVP-I" cmd filename -oExport_filename [-uUser] [-pPassword] [-q]
```

**Parameters:**

*cmd*

Must be one of the following commands:

- **-export**

Export the summary of the analysis result. Available to users of all access levels when TDAS RVP-I is password protected

- **-exportall**

Export the details of the analysis result. Available only to Full Access Level users when TDAS RVP-I is password protected.

*filename*

This is the name (including the path, if necessary) of the data file to be analyzed by TDAS RVP-I. If this parameter is not specified in the command-line or TDAS RVP-I can not find exactly one assay module to analyze the data file, the export process fails.

**-o***Export\_filename*

This is the name (including the path, if necessary) of the exported file which is the output of this command. This parameter must be provided; otherwise, the export process fails.

**-u***User*

This optional parameter submits the name of the user that runs this command. The user name is mainly for log-on information purposes and displays in the export file. This parameter is ignored if log-on is not enabled.

**-p***Password*

This parameter submits the password for accessing TDAS RVP-I. If TDAS RVP-I is not password protected, this parameter is ignored. Note that when TDAS RVP-I is password protected, the -exportall feature is only available to Full Access Level users.

**-q**

This optional flag tells TDAS RVP-I to export the analyzed data without logging any messages to the log file.

This section of the manual describes each of the TDAS RVP-I windows.

Most dialog boxes contain Help, OK, Cancel, Exit, or Close buttons. They perform the following functions:

- **Help** - Opens the online help
- **OK** - Confirms the task you are performing.
- **Cancel** - Cancels the task you are performing
- **Exit** - Exits the current window
- **Close** - Closes the current window.

Unless a button behaves differently than stated above, it is not documented as part of the dialog box description in the following sections.

## *Summary View Window*

---

The **Summary View** is the main window of the TDAS RVP-I software. When a file is open, it displays a data analysis summary.

## **Menu Bar**

The menu bar contains the following menus:

- **File** - open or close a file, export results, view file properties, print results, or exit the program
  - **View** - Change viewing options for the toolbar, status bar, file information bar, legend bar, target columns, and preferences
  - **Sample** - Mark the sample as negative control, show or print complete data for selected sample(s)
  - **Target** - Show or print the complete data for selected target(s)
-

- **Admin** - Disable/enable log-on and password, switch identity, change passwords, or change options
- **Help** - Show the complete **Help** manual, or open the **About TDAS RVP-I** dialog box.

## Tool Bar

The Tool bar contains the following icons:

- **Open** - Opens a CSV file
- **Export Summary As ...** - Exports summary data
- **Export to PDF ...** - to export a PDF report
- **Print** - Print summary data
- **Toggle file info bar** - Toggle the information bar on or off
- **Toggle legend bar** - Toggle the legend bar on or off
- **Toggle target columns** - Toggle target columns on or off. Only available when the displayed assay supports this feature
- **About** - Displays the "About TDAS RVP-I" information window

## File Information Bar

- **File name** - name and location of the originating CSV data file currently displayed
- **Batch name** - name used to uniquely identify the batch and CSV file for the current assay data
- **Date and time created** - date and time the CSV data file was created
- **Analyzed by** - user name of the person currently logged on to TDAS RVP-I, if log-on function is enabled

## Data Grid

Header row(s) - contain the names of each column header, including the location and sample name, names of summary columns, target names, and "Notes and explanations"

Multiple sample rows - individual rows containing the information for each sample; one sample per row

## Legend Bar

Legend describing the assay analysis module used to analyze the file, and the colours used to differentiate the call cells in the data grid

## Status Bar

Additional assay-specific information

**FIGURE 5. Summary View Window**

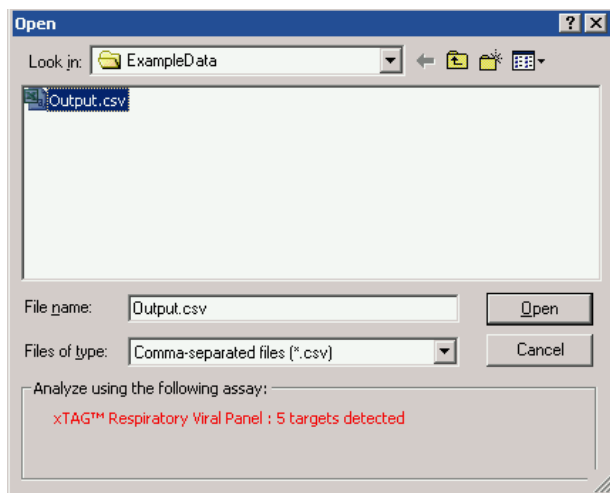
The screenshot shows the 'TDAS RVP-I (version 1.11) - Summary view' window. It includes a menu bar (File, View, Sample, Target, Admin, Help), a toolbar, and a status bar at the bottom. The main area contains a table with columns for Sample, POS Calls, Controls (Run Control, Internal C...), Influenza a..., RSV (RSV A, RSV B), and Notes and explanations. The table lists 12 samples (A1-D2) and several controls. Sample C1 is highlighted in orange, indicating a 'POS' result for Influenza B. Sample A2 is highlighted in pink, indicating a 'POS' result for RSV B. Sample B2 is highlighted in pink, indicating a 'POS' result for RSV A. Below the table is a legend for 'Analyzed using: xTAG™ Respiratory Viral Panel' with color-coded boxes for 'Target not detected', 'Target detected', 'Call(s) not made', 'Unexpected control call(s)', 'Sample has at least one target detected', 'Signal significant', 'Run control sample', and 'Negative control sample'. A text box at the bottom provides a caution about hybridization-based assays.

Lo...	Sample	POS Calls	Run Control	Internal C...	Influenza a...	RSV A	RSV B	Notes and explanations
A1	Sample 1		ABS	PRES	NEG	NEG	NEG	
B1	Sample 2		ABS	PRES	NEG	NEG	NEG	
C1	Sample 3	Influenza B	ABS	PRES	POS	NEG	NEG	
D1	Sample 4		ABS	PRES	NEG	NEG	NEG	
E1	Sample 5		ABS	PRES	NEG	NEG	NEG	
F1	Sample 6		ABS	PRES	NEG	NEG	NEG	
G1	Sample 7		ABS	PRES	NEG	NEG	NEG	
H1	Sample 8		ABS	PRES	NEG	NEG	NEG	
A2	Sample 9	RSV B	ABS	PRES	NEG	NEG	POS	
B2	Sample 10	RSV A	ABS	PRES	NEG	POS	NEG	
C2	Sample 11		ABS	PRES	NEG	NEG	NEG	
D2	Sample 12		ABS	PRES	NEG	NEG	NEG	

## Open Dialog Box

The **Open** dialog box displays when you open a file. TDAS RVP-I checks that the selected file conforms to the format required by the analysis assay of the xTAG RVP Test. This dialog displays the standard Windows options for opening a file, plus the "Analyze using the following assay:" area that displays which data analysis assay will analyze the selected file.

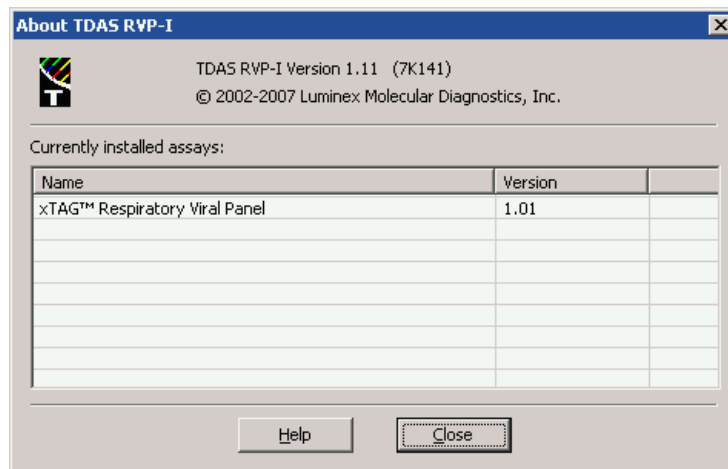
**FIGURE 6. Open Dialog Box**



### About TDAS RVP-I Dialog Box

On the **Help** menu, click **About TDAS RVP-I** to open the **About TDAS RVP-I** dialog box. This dialog displays the TDAS RVP-I version, copyright information and a list of all assays installed along with their version numbers.

**FIGURE 7. About TDAS RVP-I Dialog Box**



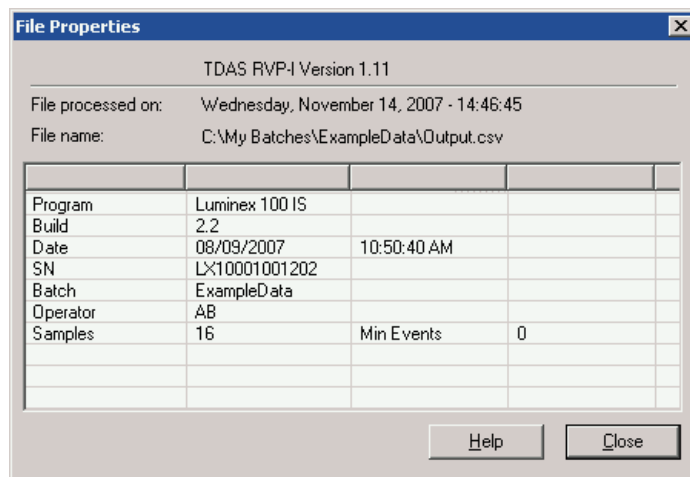
### File Properties Dialog Box

On the **File** menu, click **Properties** to open the **File Properties** dialog box. This dialog box displays:

- TDAS RVP-I version used to process the file
- The date and time the file was processed by TDAS RVP-I
- File name (including path)
- Information extracted from the file, such as:

- Date and time the data was created
- Name and version of the device that has produced the data
- Name of the operator who created the data
- Serial number of the device that has produced the data
- Name of the batch
- Sample events
- Heater temperature

**FIGURE 8. File Properties Dialog Box**

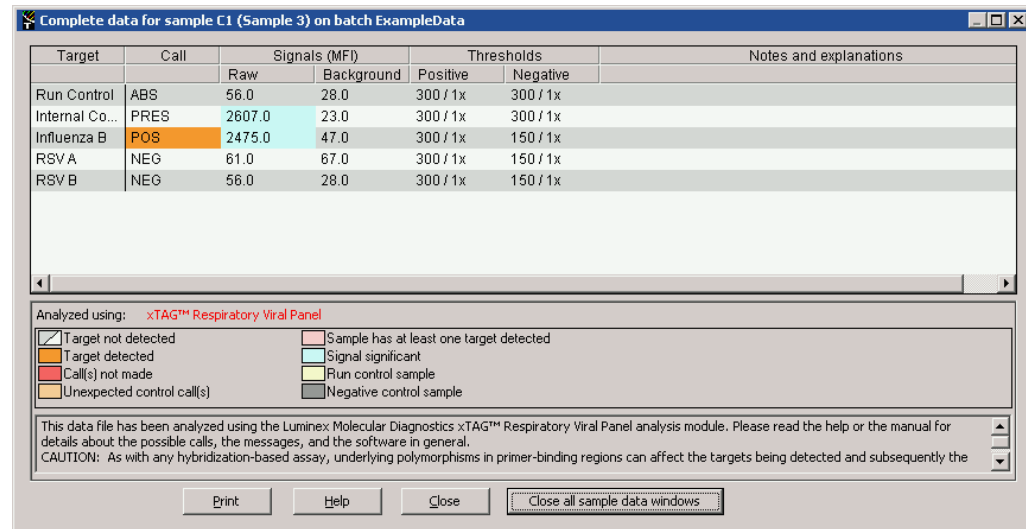


## *Complete Data for Sample Dialog Box*

After you select a sample to view in detail, the following options are available:

- **Print** - Print detailed sample data
- **Close all sample data windows** - Closes all open detailed sample windows.

**FIGURE 9. Complete Data for Sample Dialog Box**



## View and Print Complete Data Dialog Boxes

Use the **View** and **Print Complete** dialog boxes to select one or more targets to view or print detailed data.

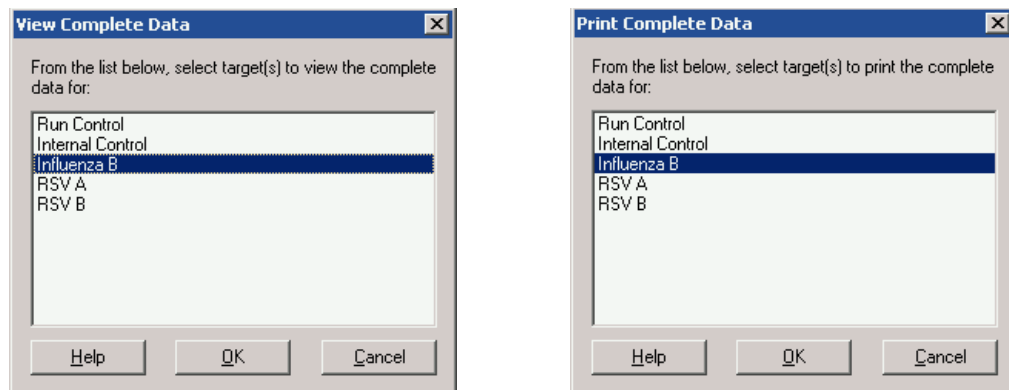
**NOTE:** This feature is available to Full Access Level users only, if password protection is enabled.

To open the **View Complete Data** dialog box, click **Show Complete Data** on the **Target** menu.

To open the **Print Complete Data** dialog box, click **Print Complete** on the **Target** menu.

These dialogs display the list of targets to select from.

**FIGURE 10. View and Print Complete Data Dialog Boxes**

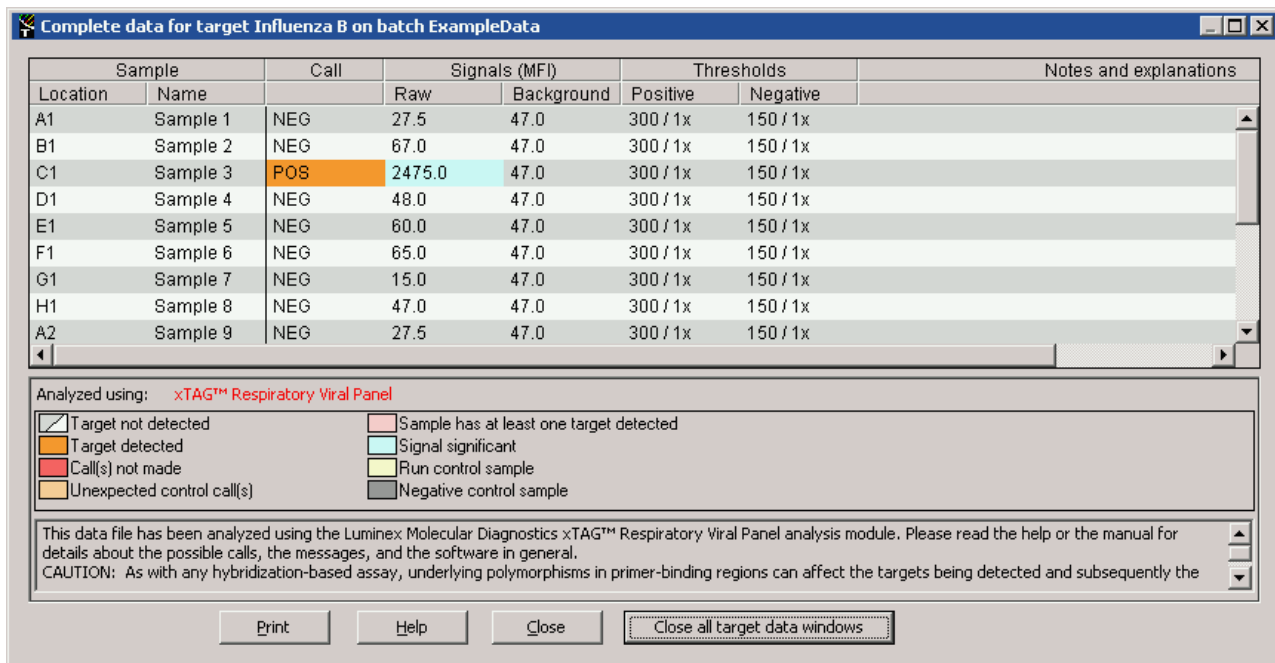


## Complete Data for Target Dialog Box

After you select a target to view in detail, the following options are available:

- **Print** - Print the detailed target data
- **Close all target data windows** - Closes all open detailed target windows.

**FIGURE 11. Complete Data for Target Dialog Box**

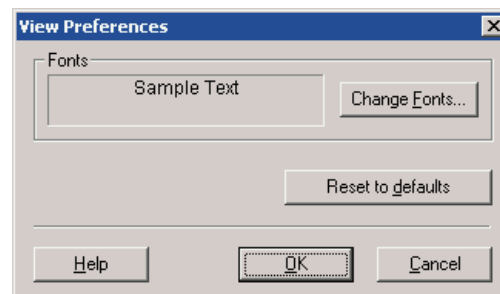


## View Preferences Dialog Box

Change user-defined preferences in the **View Preferences** dialog box. To open this dialog box, click **Preferences** on the **View** menu. This dialog contains:

- **Fonts field** - Displays Sample Text in the currently used font type.
- **Change Fonts...** - Opens a dialog to change the font type.
- **Reset to defaults** - Restores the font to the default value.

**FIGURE 12. View Preferences Dialog Box**



## Print Items Dialog Box

**NOTE:** This feature is available to Full Access Level users only, if password protection is enabled.

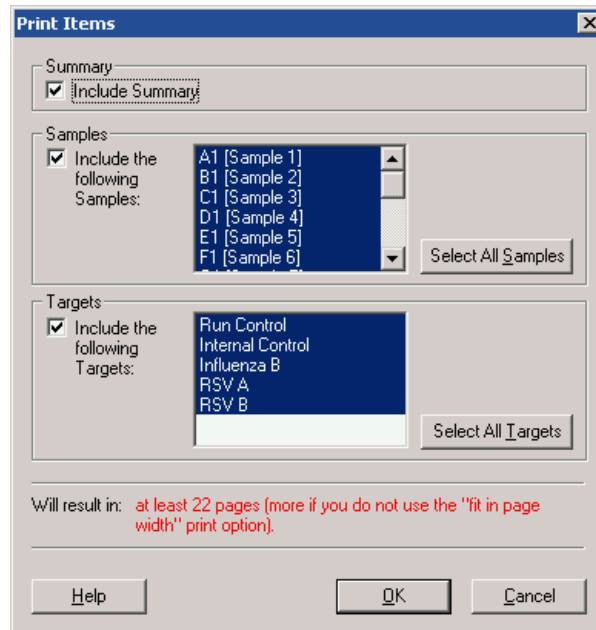
On the **File** menu, click **Print All** to open the **Print Items** dialog box.

The following checkboxes and buttons are available in the **Print Items** dialog box:

- **Include Summary** - Includes summary data in the PDF.
- **Include the following Samples** - Includes the selected sample data selected in the PDF.
- **Select All Samples** - Selects all samples in the list.
- **Include the following Targets** - Includes the selected targets in the PDF.
- **Select All Targets** - Selects all targets in the list.
- **Browse** - Opens a dialog box where you can select or enter a PDF file name.
- **OK** - Continues the export process, and opens the PDF Page Setup dialog.

The **Will result in:** field displays the minimum number of pages that are printed.

**FIGURE 13. Print Items Dialog Box**



## Export to PDF Dialog Box

**NOTE:** If password protection is enabled, only Full Access Level Users can export detailed sample and target data. All users can export summary view data. If the Export to PDF command is

grayed out, you will need to reinstall TDAS RVP-I allowing printer installation privileges. See your IT administrator if you do not have the appropriate privileges.

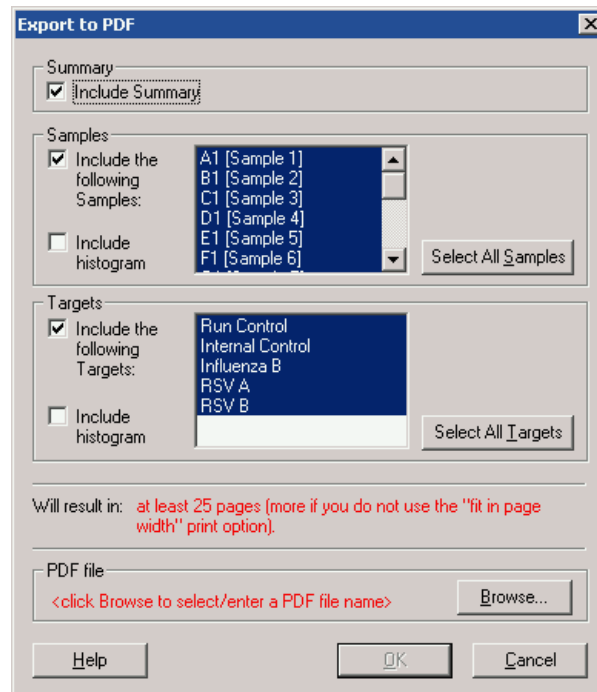
On the **File** menu, click **Export to PDF** to open the **Export to PDF** dialog box.

The following checkboxes and buttons are available in the **Export to PDF** dialog box:

- **Include Summary** - Includes summary data in the PDF.
- **Include the following Samples** - Includes the selected sample data selected in the PDF.
- **Select All Samples** - Selects all samples in the list.
- **Include histogram (samples)** - Includes histograms for the selected samples in the PDF.
- **Include the following Targets** - Includes the selected targets in the PDF.
- **Include histogram (targets)** - Includes histograms for the selected targets in the PDF.
- **Select All Targets** - Selects all targets in the list.
- **Browse** - Opens a dialog box where you can select or enter a PDF file name.
- **OK** - Continues the export process and opens the **PDF Page Setup** dialog box.

The **Will result in:** field displays the minimum number of pages that are printed.

**FIGURE 14.** Export to PDF Dialog



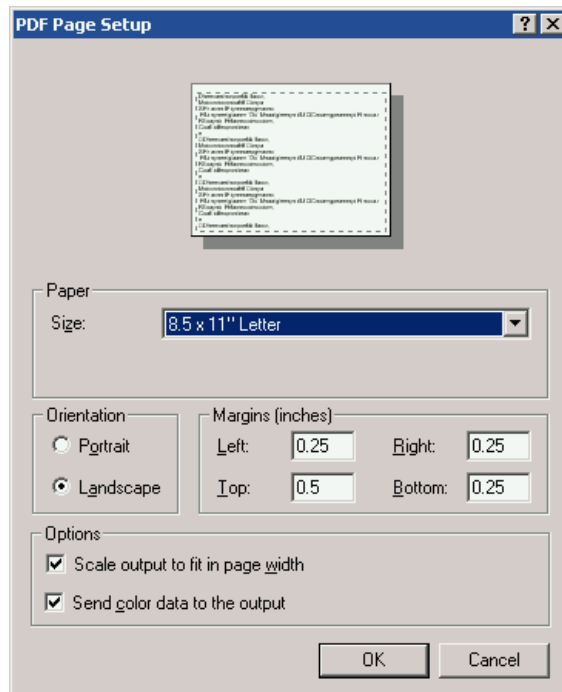
## PDF Page Setup Dialog Box

The **PDF Page Setup** dialog box opens when you click **OK** in the **Export to PDF** dialog box.

The following items are available in the **Print Items** dialog box:

- **Paper Size** - Select the paper size for the PDF.
- **Orientation** - Select Portrait or Landscape.
- **Margins** - Set the margins, in inches.
- **Scale output to fit in page width** - Scale each data grid to fit horizontally on one page.
- **Send color data to the output** - Makes all colours display in the PDF report.
- **OK** - Launches the export process.
- **Cancel** - Cancels the export process.

**FIGURE 15. PDF Page Setup Dialog Box**



## Log-On TDAS RVP-I Dialog Boxes

There are two log-on dialogs: one asking for a user name only, and one that requires a password. When TDAS RVP-I is not password protected, may still enter a user name for display, print and export purposes. When TDAS RVP-I is password protected, users must log on to TDAS RVP-I with a password. The specific password determines the level of access (initially set up at installation) that the user has for that

session of TDAS RVP-I. Full Access Level users may change passwords during a session (see “Change Passwords” on page 42.)

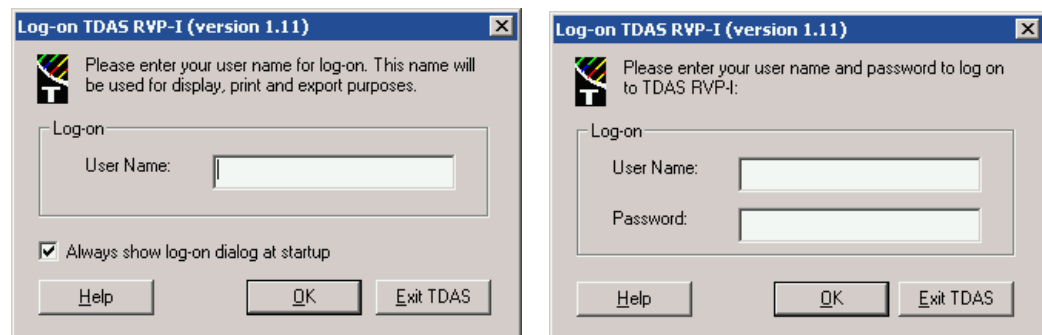
The **Log-on** dialog box displays:

- at startup of TDAS RVP-I if it is log-on enabled,
- when TDAS RVP-I has timed out,
- when switching identity,
- when enabling log-on function when TDAS RVP-I is not log-on enabled or password protected.

The following items are available in the **Log-on** dialog box:

- **User Name** text box - The user name is used for display, print and export purposes and may be left blank.
- **Always show log-on dialog at startup** checkbox - Disables log-on if it is NOT checked. This option is only available at startup of TDAS RVP-I, and only if the password protection function is NOT enabled.
- **Exit TDAS** - Cancels the log-on process and exit the software. This button only displays at startup or timeout.

**FIGURE 16. Log-on TDAS RVP-I Dialog Boxes**



## Setup Passwords Dialog Box

**NOTE:** Use this dialog only if password protection is on.

On the **Admin** menu, click **Enable Password** to open the **Passwords** dialog.

This dialog has two sections:

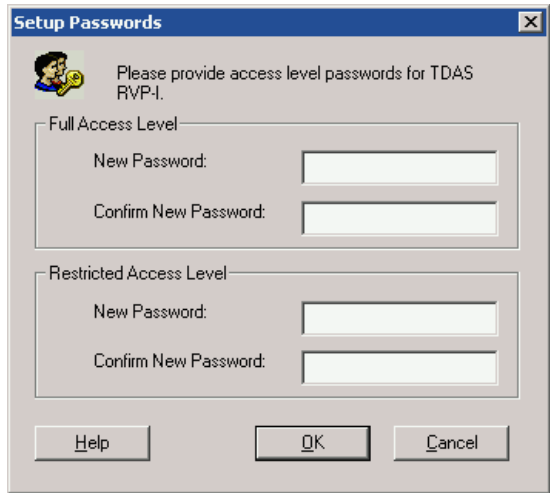
**Full Access Level** - This section sets the password for access to Full Access Level privileges.

- **New Password:** Enter the new password.
- **Confirm New Password:** Confirm the new password

**Restricted Access Level** - This section sets the password for access to Restricted Access Level privileges.

- **New Password:** Enter the new password.
- **Confirm New Password:** Confirm the new password.

**FIGURE 17. Setup Passwords Dialog Box**

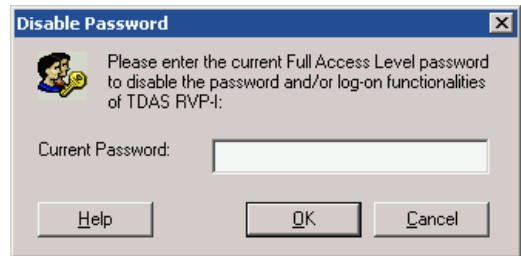


## *Disable Passwords Dialog Box*

**NOTE:** Only Full Access Level users can disable the log-on and/or password functions.

On the **Admin** menu, click **Disable Password** to open the **Disable Password** dialog box. This dialog has only one text field, **Current Password**, in which you enter the current Full Access Level password.

**FIGURE 18. Disable Password Dialog Box**



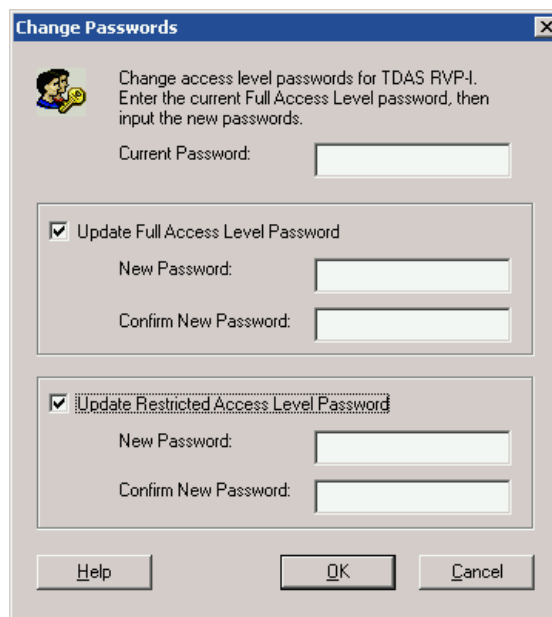
## Change Passwords Dialog Box

**NOTE:** Only Full Access Level users can change passwords.

Use this dialog box when TDAS RVP-I is password protected and you want to change the passwords. On the **Admin** menu, click **Change Passwords**. This dialog box has two checkboxes:

- **Update Full Access Level Password** - Check to update Full Access Level passwords.
  - **New Password:** Enter the new password.
  - **Confirm New Password:** Confirm the new password.
- **Update Restricted Access Level Password** - Check to update Restricted Access Level password.
  - **New Password:** Enter the new password.
  - **Confirm New Password:** Confirm the new password

**FIGURE 19.** Change Passwords Dialog Box



## Options Dialog Box

If the Log-On function is enabled, you can set TDAS RVP-I to time out if the application has been idle longer than the pre-set period of time. Only Full Access Level users can change the timeout period if the Password function is enabled.

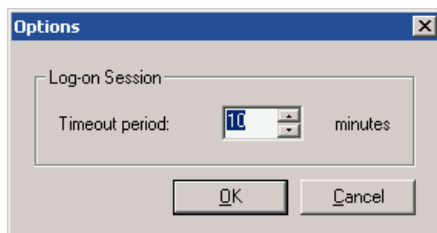
On the **Admin** menu, click **Options** to open the **Options** dialog box.

This dialog has only one text field, **Timeout Period**, in which you enter the desired number of minutes for the timeout period.

**NOTE:** The default timeout period is 10 minutes. To disable the timeout function, change the timeout period to 0 minutes.

**FIGURE 20. Options Dialog Box**

---



# *xTAG Assays Analyzed by TDAS RVP-I*

---

This section describes assay-specific analysis information for xTAG assays, including explanations for assay-specific target detection calls, colour-coding, and messages.

The xTAG Respiratory Viral Panel Test consists of viral targets that are analyzed based on signals obtained from single hybridization probes.

The calls and data are displayed in the different views of TDAS RVP-I, which have the following assay-specific components:

#### Possible Calls

- **POS** Target Detected
- **NEG:** Target not detected
- **PRES:** internal / run control detected
- **ABS:** internal / run control not detected
- **No Call** no call possible due to the assay-specific criteria not being met

See “Summary View Messages” on page 34. and “Detailed View Messages” on page 36 for detailed lists of possible No Call messages.

The **Legend bar** at the bottom of the display page lists the name of the assay analysis module used, along with an assay-specific description of the colours used to distinguish the cells within the data display grid. For the xTAG Respiratory Viral Panel Test, there are eight legend items showing the colours used:

- **Target not detected** - Cell colour indicates that no positive signal was detected for the corresponding target in this sample (NEG), or that the control targets have the expected calls for this sample. The "Location" and "Sample" cells, as well as the "Notes and explanations" cell are distinguished with this colour if only NEG and the expected control calls were made for this sample
- **Target detected** - Distinguishes cells to indicate that a positive signal was detected for the corresponding target in this sample (POS)

- **Call(s) not made** - Distinguishes the data cells for which a call of POS, NEG, PRES, or ABS could not be made, and distinguishes the "Location" and "Sample" cells as well as the "Notes and explanations" cell to indicate that at least one data cell has a No Call for this sample
- **Unexpected Control Call(s)** - Distinguishes the internal or run control cells for which an unexpected call has been made
- **Sample has at least one target detected** - Distinguishes the "Location" and "Sample" cells if a positive signal was detected for at least one target in this sample (POS)
- **Signal significant** - Used only in the detailed views (not in the summary view) to indicate raw signal cells for which the signal is significant
- **Run control sample** - Distinguishes all cells of the run control sample in the summary view and detailed target views (the data cells, "Location" and "Sample" cells, and the "Notes and explanation" cell)
- **Negative control sample** - Distinguishes all cells of the negative control sample in the summary view and detailed target views (the data cells, "Location" and "Sample" cells, and the "Notes and explanation" cell)

## *Summary View Messages*

---

The following messages may display in the Notes and explanations column of the Summary View:

### **This well was not read by the Luminex machine**

- No data is available to process because the Luminex analyzer did not read any values in this well.

### **Assay failed: unexpected value(s) encountered or sample is empty for negative control sample**

- Either an unexpected value was encountered in this sample or the sample well was empty.

### **Assay failed: 'User cancel' message from the Luminex machine for negative control sample**

- The Luminex analyzer was interrupted by the user when reading this sample.

### **Assay failed: low bead count(s) for negative control sample**

- The bead count for at least one of the bead populations used by the kit is too low for the negative control. This may indicate that the readings for this well are not reliable.

### **Assay failed: a negative control signal exceeds acceptable value**

- At least one of the negative control values exceeds the accepted threshold value which indicates that the data values for this run of the assay may be in question.

**Sample failed: unexpected value(s) encountered or sample is empty**

- Either an unexpected value was encountered in this sample or the sample well was empty

**NOTE:** If the "Notes" column was edited before, during or after reading, TDAS RVP-I may not be able to correctly interpret the messages.

**Sample failed: 'User cancel' message from the Luminex machine for this well**

- The Luminex analyzer was interrupted by the user when reading this sample well.

**NOTE:** If the "Notes" column was edited before, during or after reading, TDAS RVP-I may not be able to correctly interpret the messages.

**Sample failed: low bead count for internal control**

- The bead count of the internal control is too low AND there are no POS calls present in this sample. This may indicate that the readings for this well are not reliable.

**Sample failed: unexpected control call(s)**

- Calls for internal and run controls are not acceptable call combinations. This can occur if the sample is not a run control sample, but the internal control target has an ABS call and the remaining targets do not have POS calls.

**Target(s) failed: low bead count(s)**

- The bead count of one or more targets is too low. This may indicate that the readings for this well are not reliable.

**Target(s) failed: value(s) not within predefined ranges**

- The value(s) for one or more targets does not meet the predetermined thresholds that would allow a call of POS, NEG, PRES, or ABS to be made.

**Targets failed: incompatible signals between targets**

- The signal for a particular target is not compatible with that of its reference target.

**Warning: unexpected control call(s)**

- The calls for the internal and run controls are not expected call combinations. This can occur if the sample is not a run control sample, but the run control target does not have an ABS call and/or the internal control target does not have a PRES call.

**Warning: 'Luminex message' message from the Luminex machine for this well**

- The sample analysis is performed as for a normal well, but the message warns the user that something unusual may have happened during the data reading process which may affect the results.

**NOTE:** Only the 'Sample Empty' or 'User cancel' Luminex analyzer messages are expected to be found.

## *Detailed View Messages*

---

### **This well was not read by the Luminex machine**

- No data is available to process because the Luminex analyzer did not read any values in this well.

### **Assay failed: unexpected value(s) encountered or sample is empty for negative control sample**

- Either an unexpected value was encountered in this sample or the sample well was empty.

### **Assay failed: 'User cancel' message from the Luminex machine for negative control sample**

- The Luminex analyzer was interrupted by the user when reading this sample well.

### **Assay failed: low bead count(s) for negative control sample**

- The bead count for at least one of the bead populations used by the kit is too low for the negative control. This may indicate that the readings for this well are not reliable.

### **Assay failed: a negative control signal exceeds acceptable value**

- At least one of the negative control values exceeds the accepted threshold value which indicates that the data values for this run of the assay may be in question.

### **Sample failed: unexpected value(s) encountered or sample is empty**

- Either an unexpected value was encountered in this sample or the sample well was empty.

**NOTE:** If the "Notes" column was edited before, during or after reading, TDAS RVP-I may not be able to correctly interpret the messages.

### **Sample failed: 'User cancel' message from the Luminex machine for this well**

- The Luminex analyzer was interrupted by the user.

**NOTE:** If the "Notes" column was edited before, during or after reading, TDAS RVP-I may not be able to correctly interpret the messages.

**Sample failed: low bead count for internal control**

- The bead count of the internal control is too low AND there are no POS calls present in this sample. This may indicate that the readings for this well are not reliable.

**Sample failed: unexpected control call(s)**

- The calls for the internal and run controls are not acceptable call combinations. This can occur if the sample is not a run control sample, but the internal control target has an ABS call and the remaining targets do not have POS calls.

**Target failed: low bead count**

- The bead count of this target is too low. This may indicate that the readings for this well are not reliable.

**Target failed: value not within predefined ranges**

- The value for this target does not meet the predetermined thresholds that would allow a call of POS, NEG, PRES, or ABS to be made.

**Targets failed: incompatible signals between targets**

- The signal for a particular target is not compatible with that of its reference target.

**Warning: unexpected control call(s)**

- The calls for the internal and run controls are not expected call combinations. This can occur if the sample is not a run control sample, but the run control target does not have an ABS call and/or the internal control target does not have a PRES call.

**Warning: 'Luminex message' message from the Luminex machine for this well**

- The sample analysis is performed as for a normal well, but the message warns the user that something unusual may have happened during the data reading process which may affect the results.

**NOTE:** Only the 'Sample Empty' or 'User cancel' Luminex analyzer messages are expected to be found.



---

This section of the TDAS RVP-I manual provides information on how to perform typical operations of TDAS RVP-I.

Note that some of these tasks are restricted to users with Full Access Level. If you cannot perform one of these tasks, log back in with the Full Access Level password.

## *Open a Data File*

---

On the **File** menu, click **Open**.

## *Close a Data File*

---

On the **File** menu, click **Close**.

## *View Detailed Sample Results*

---

1. Click the desired entries in the **Summary View**. To select more than one sample, press the Ctrl key while clicking.
2. Right-click selected samples. Select **Show Complete Sample Data...**

TDAS RVP-I opens a separate window for each sample you selected.. Consequently, if you select a large number of samples, a large number of windows opens.

## *View Detailed Target Results*

---

Once a data file has been successfully opened, TDAS RVP-I displays the summary results. To view the complete result set for any target, follow any of the steps below:

- On the **Target** menu, click **Show Complete Data...**, In the **View Complete Data** dialog box, select the desired target(s) and click **OK**.
- In the **Summary View**, right-click the appropriate column heading, then click **Show Complete target Data** where *target* is the name of the target you selected.
- In the detailed sample view, double-click on the row corresponding to the target for which you want to view complete data.

## *Print Summary Results*

---

On the **File** menu, click **Print**.

## *Preview Print Summary Results*

---

On the **File** menu, click **Print Preview**. To print from the preview, click **Print**.

## *Print Complete Sample Results*

---

Display the complete results for the samples you want. See “View Detailed Sample Results” on page 39.

For more printing options, see “Print Items Dialog Box” on page 26. Click **Print** in the resulting window. This method allows you to know exactly what will be printed.

## *Print Complete Target Results*

---

Display the complete results for the targets you want. Click **Print** in the resulting dialog box.

For more printing options, see “Print Items Dialog Box” on page 26.

## *Export Summary Results*

---

On the **File** menu, click **Export Summary As...** In the **Export Summary** dialog box, specify the location and file name of the exported data.

## *Export Complete Results*

---

On the **File** menu, click **Export Full Data As...** In the **Export Complete Data** dialog box, specify the location and the file name of the exported data.

---

## *Export to PDF*

---

**NOTE:** If the Export to PDF command is grayed out, you will need to reinstall TDAS-RVP-I allowing printer installation privileges. See your IT administrator if you do not have the appropriate privileges.

1. On the **File** menu, click **Export to PDF**.
2. In the **Export to PDF** dialog box, choose your desired settings, then click **OK**.  
For more information about the available settings, see “Export to PDF Dialog Box” on page 26.
3. In the **PDF Page Setup** dialog box, choose your desired settings, then click **OK**.  
For more information about the available settings, see “PDF Page Setup Dialog Box” on page 28.

---

## *Change the Negative Control Sample*

---

Right-click the desired sample in the summary view, then click **Mark as Negative Control**.

For more information about changing the negative control, see “Display Options” on page 5.

---

## *View Available Assays*

---

On the **Help** menu, click **About TDAS RVP-I**.

---

## *Maximize the Data Display Area*

---

To temporarily remove user interface elements:


- On the **View** menu, click **Status bar** to toggle the status bar off.
- On the **View** menu, click **File Information bar** to toggle the **File Information** bar off.
- On the **View** menu, click **Status bar** to toggle the **Status bar** off.
- On the **View** menu, click **Legend bar** to toggle the **Legend bar** off.
- On the **View** menu, click **Toolbar** to toggle the **Tool bar** off.

To reposition a toolbar (either detach it from the window and leave it floating, or attach it to any other window side), click the left border of the toolbar and drag it to another location.

To resize a **Complete sample data** or **Complete target data** dialog box, click and drag on the dialog box borders.

## *Toggle Target Columns*

---

To display all or none of the target columns in the summary view, click  on the toolbar.

This button is only available when the opened assay supports this feature. This display option has corresponding effects on the printing of the results summary and the exporting of the results to PDF.

## *Expand Column Headers*

---

Double-click the right edge of the column header.

## *Enable Password Protection*

---

On the **Admin** menu, click **Enable Password**. In the **Setup Passwords** dialog box, specify the **Full Access Level** and **Restricted Access Level** passwords.

**NOTE:** Passwords must be 30 alphanumeric characters or less.

## *Disable Password Protection*

---

On the **Admin** menu, click **Disable Password**. In the **Disable Password** dialog box, enter the **Full Access Level** password.

**NOTE:** Disabling password protection does not automatically disable the log-on function.

## *Change Passwords*

---

On the **Admin** menu, click **Change Passwords...**

In the **Change Passwords** dialog box, enter the current **Full Access Level** password.

**NOTE:** Passwords must be 30 alphanumeric characters or less.

## *Enable Log-On*

---

On the **Admin** menu, click **Enable Log-on**. In the **Log-on** dialog box, enter a user name. The user name is used for display, print and export purposes and may be left blank.

## *Disable Log-On*

---

**NOTE:** When access to TDAS RVP-I is password protected, disabling the log-on function also disables password protection

On the **Admin** menu, click **Disable Log-on**. In the **Disable Password** dialog box, enter the **Full Access Level** password.

When access to TDAS RVP-I is NOT password protected but is log-on enabled, click **Disable Log-On** on the **Admin** menu.

## *Switch Identity*

---

On the **Admin** menu, click **Switch Identity**. In the **Log-on** dialog box, enter the new user name and password, if required.

## *Change Timeout Period*

---

On the **Admin** menu, click **Options**. In the **Options** dialog box, enter the desired timeout period.

## *Disable Timeout*

---

On the **Admin** menu, click **Options**. In the **Options** dialog box, enter 0 for the desired timeout period.

## *Open TDAS RVP-I GUI from Command Line*

---

The syntax for launching the TDAS RVP-I GUI is:

```
“TDAS RVP-I filename [-uUser][-pPassword][-q]
```

For more information about this command-line option and its parameters, please see “Using Command-Line Options” on page 16.

## *Export Results Summary from Command Line*

---

The syntax for exporting the results summary is:

**"TDAS RVP-I" -export** *filename* **-o***Export\_filename* **[-u***User***] [-p***Password***] [-q]**

For more information about this command-line option and its parameters, please see "Using Command-Line Options" on page 16.

## ***Export Results Details from Command Line***

---

The syntax for exporting the results details is:

**"TDAS RVP-I" -exportall** *filename* **-o***Export\_filename* **[-u***User***] [-p***Password***] [-q]**

For more information about this command-line option and its parameters, please see "Using Command-Line Options" on page 16.